

View in action



"Suitable for large diameter rolls"



## Specifications

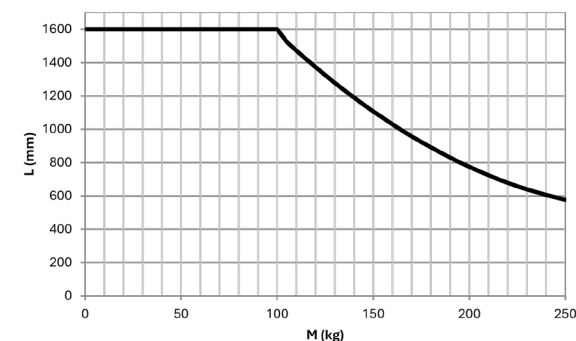
Category	Tool
Handling needs	Lifting and tilting rolls by the core
Drive	Electric
Core material	Thick cardboard and soft plastic
Max roll diameter	ø1200 mm
Core sizes	3" (76 mm) or 6" (152 mm)
Core dimension tolerance	±3 mm
Core adaptation >3 mm	Spacer plates
Overload sensor	Electronic
Tilting capacity	See diagram below
Swivel capacity (degrees)	30°
Tilting capacity (degrees)	90°
Tilting actuator capacity	81 - 8100 N
Electronic overload protection	Yes
Construction	Steel and/or Stainless steel
RTC adapter	Not available
Control	Electric (wired remote)
IP protection	31 or 65
Weight (kg)	34
Max lifting capacity	Limited according to the specific load type and weight the lift is designed for.
Lift compatibility	All except B and C Lines
Dimensions (mm)	L 834 / W 238 / H 620

**CUSTOMIZED** Can be adapted in length.

## Accessories

Grabbing Tines ø152 mm - with 4 knob screws
Grabbing Tines ø76 mm - with 4 knob screws
Spacer Plate 3 mm (Not compatible with knob screws)
Anti-telescopic safety up to ø1200

## Tilt Capacity



# Electric Roll Manipulator (ERM)

The ERM easily and safely lifts, transports, and tilts heavy rolls from vertical to horizontal positions. Fully electrically controlled with a remote, it is ideal for confined spaces.

### Powerful actuator = High tilting capacity

Capacity depends on the roll's length and weight, assessed via the diagram. The roll can be tilted if the point lies below the diagram line.

### Swivel unit simplifies positioning

The ERM's rear swivel makes it easy to position the expander. The maximum angle can be adjusted with two screws (longer screws result in smaller angles).

### Secure grip for safety

An adjustable stop plate ensures proper gripping and positioning, with a green light indicating secure hold.

### Compatible with various core sizes

Standard ERM has a ±3 mm tolerance, which can be further adjusted with shims or extra gripping teeth for variations.

## Features

- For industrial use in demanding environments
- Available in a hygienic version for food and cleanroom applications
- Electrically driven gripping and tilting functions
- Manual rear swivel unit
- Strong tilting actuator with high gearing
- Designed for cores made of thick cardboard and soft plastic
- Adjustable for different core sizes (add-on)
- Smooth tilting and continuous stop
- Middle position easy lock for secure transportation
- Battery-powered with remote control
- Optional anti-telescoping safety feature
- Can be mounted on all 2-lifters with appropriate lifting capacity

