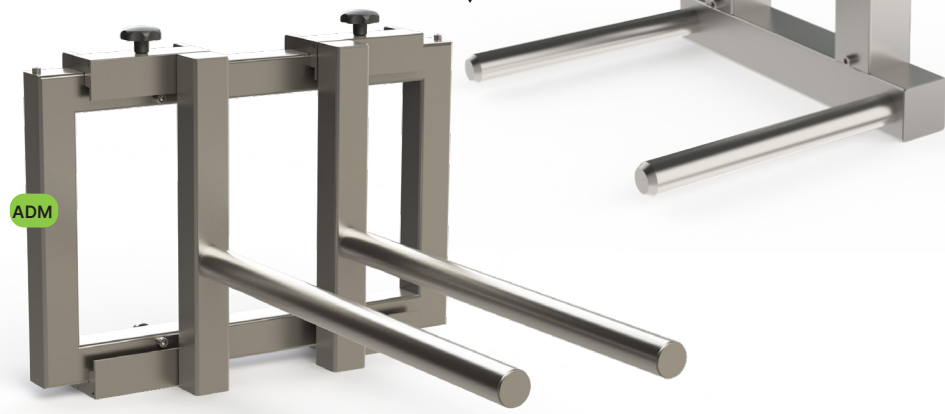


View in action



"Suitable for quick reloading between different environments"



ADM



Specifications

Category	Tool	
Handling needs	For rolls that are collected with a core in a horizontal position. Cylindrical items from standing to mandrel.	
Drive	Manual	
Mandrel standard diam.	50 mm	
RTC adapter	Possible	
Material	Stainless Steel	
IP Protection	65	
Weight (kg)	26	
Max Lifting capacity	150 Lines	130 kg
	300 Lines	250 kg
	500 Lines	450 kg
All mandrels can be customized to specific needs. Limited according to the particular load type and weight that the lifter designed to handle		

Double Mandrels

The double mandrel (DM) is perfect for handling standing cylindrical objects such as rolls, coils, and containers, which are e.g. moved from storage onto a mandrel. When combined with the manipulator unit ERU, containers can also be emptied.

Robust construction

The round geometry of the two mandrels prevents damage to the surface of the load.

When handling rolls and coils, the core remains free during lifting, so the roll or coil can be easily placed on, for example, a machine mandrel.

Like most of our lifting tools, the dimensions of the double mandrel can be easily adjusted to specific needs.

If DM is combined with the manipulator unit ERU, loads can be both grasped and rotated. This allows for emptying containers (typically drums).

The double mandrel tool is also available in a hygienic version for use in cleanrooms or the food industry.

Features

- Designed for industrial use in demanding environments
- Hygienic version for food and cleanroom applications
- Manually operated gripping function
- Can be combined with Electric Rotation Unit for handling tanks and containers
- Can be mounted on any 2-lift with suitable lifting capacity

DM - Double Mandrel	150 Lines	300/500 Lines
Lifter compatibility	All	All
Weight kg	4,2	26
Mandrel length	400 mm	500 mm
Mandrel distance	300 mm	400 mm
Dimensions	L	440 mm
	B	380 mm
	H	430 mm
Compatible Lifting Tools	ERU	Electric Rotation Unit
	ELU	Electric Leveling Unit
	LAU	Lateral Adjustment Unit

ADM - Adjustable DM	150 Lines	300/500 Lines
Lifter compatibility	All except B-80	All
Weight kg	28	36
Mandrel length	500 mm	500 mm
Mandrel min. distance	233 mm	233 mm
Mandrel max distance	600 mm	600 mm
Dimensions	L	480 mm
	B	715 mm
	H	525 mm
Compatible Lifting Tools	ERU	Electric Rotation Unit
	ELU	Electric Leveling Unit
	LAU	Lateral Adjustment Unit

